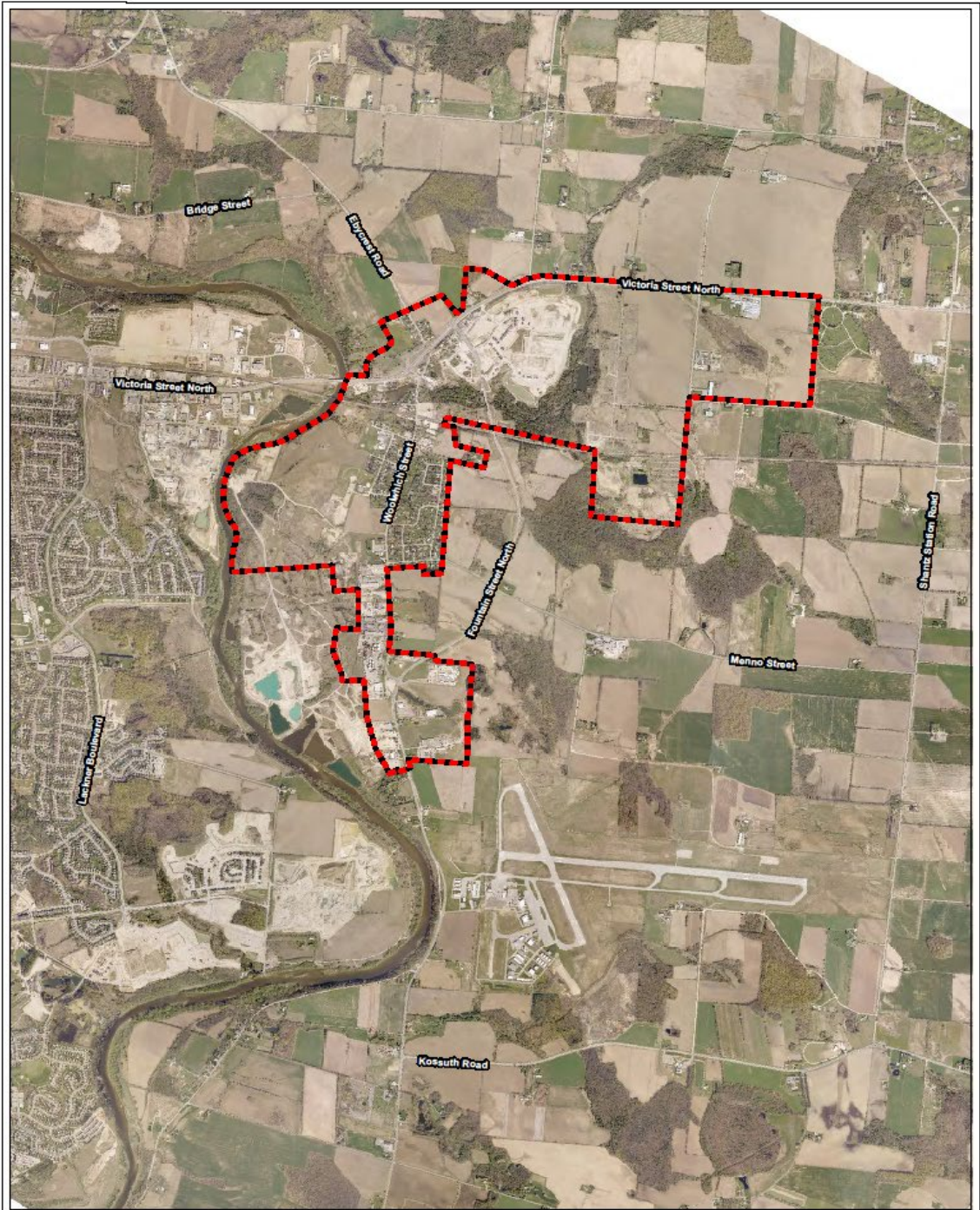


APPENDIX II



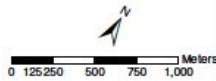
**Legend**

 Secondary Plan Area

**PLAN B Natural Heritage**  
 Landscape Ecology & Natural Heritage Planning  
176 Indiana Avenue  
 Waterbury, CT 06798  
 (203) 261-2100

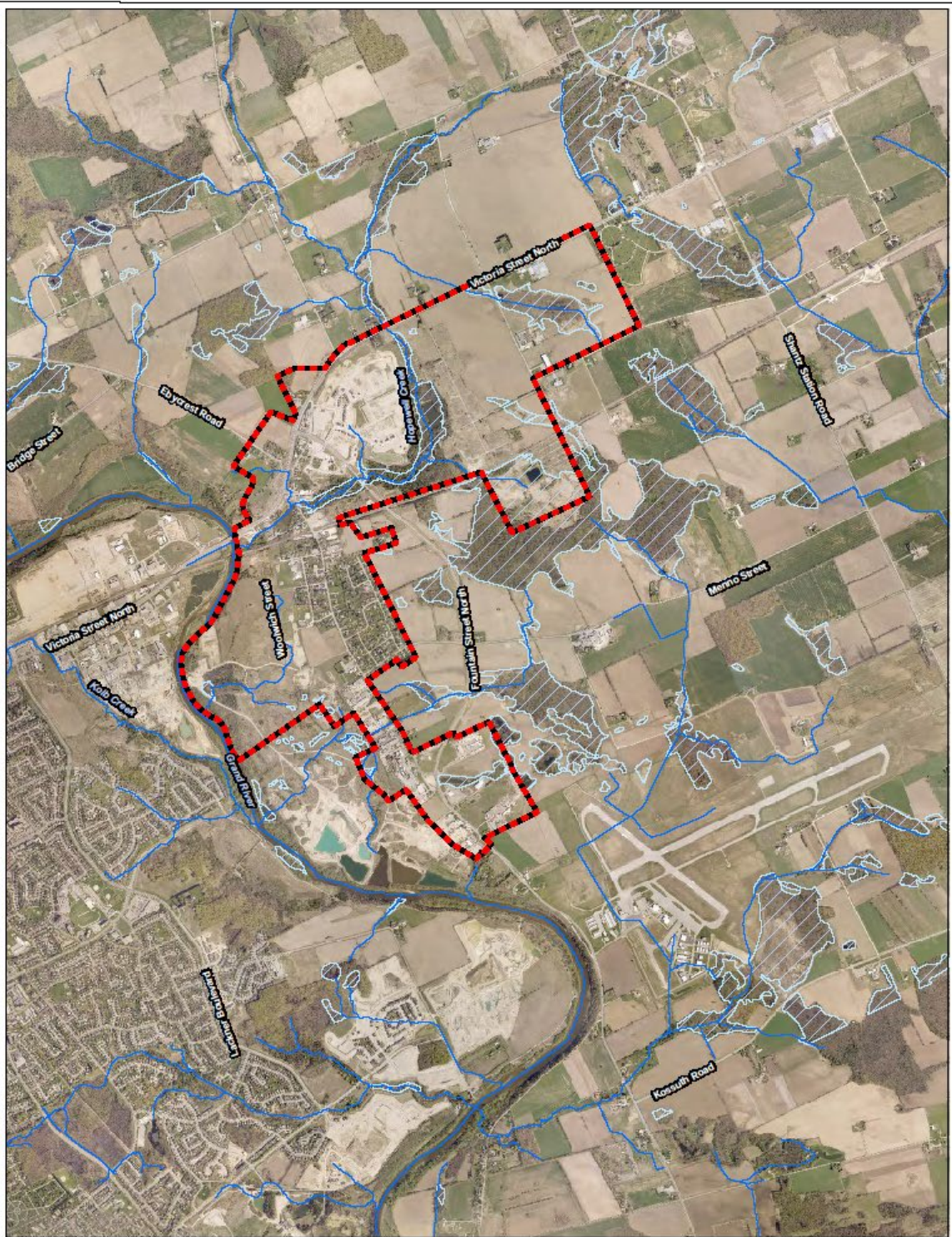
**Breslau Secondary Plan**  
 Study Area

Project #	2011-41	Figure # <b>1</b>
Date	January 2016	
Scale	1:25,000	
Prepared By:	JJ	Reviewed By: BOB



© Grand River Conservation Authority 2012





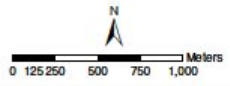
- Legend**
- Secondary Plan Area
  - Drainage (GRCA)
  - Wetland (GRCA)
  - Woodlands (MNR)

**PLAN B Natural Heritage**  
 Landscape Ecology & Natural Heritage Planning  
1000 Highway 68 West  
 Waindora, ON  
 L0R 2G0

**Breslau Secondary Plan**  
 Existing Conditions

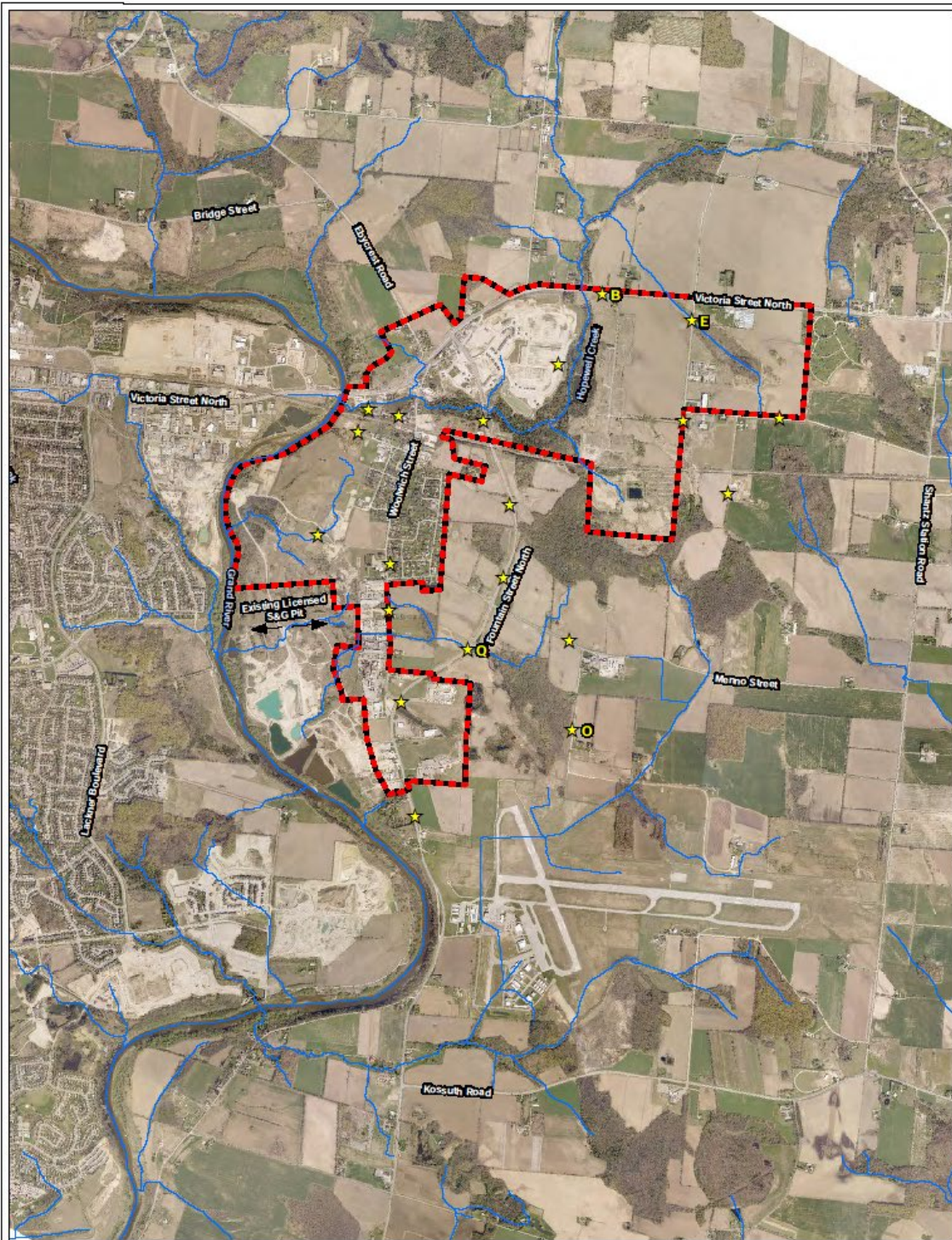
Project #	2011-41
Date	January 2016
Scale	1:25,000
Prepared By:	JJU
Reviewed By:	BOB

Figure #  
**2**



© Grand River Conservation Authority 2012  
 © Queen's Printer for Ontario, 2012

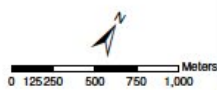




**Legend**

- - - Secondary Plan Area
- Drainage (GRCA)
- ★ Wildlife Monitoring (birds, amphibians, mammals & corridor function)

© Grand River Conservation Authority 2012

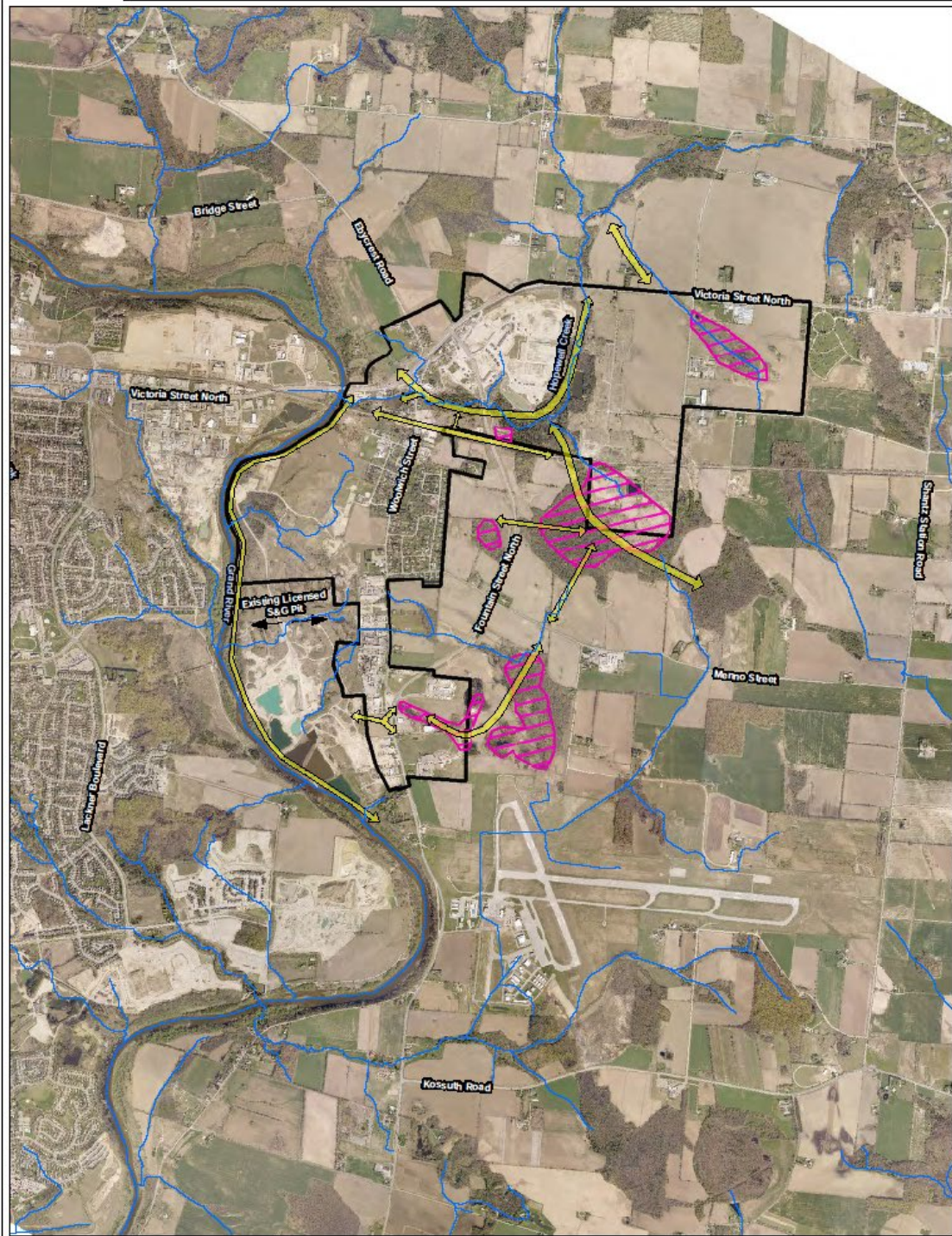


**PLAN B Natural Heritage**  
Landscape Ecology & Natural Heritage Planning  
100 S. Williams Street  
Wadsworth, OH  
43081-2102

**Breslau Secondary Plan  
Wildlife Monitoring**

Project #	2011-41	Figure #
Date	January 2016	<b>3</b>
Scale	1:25,000	
Prepared By: JJJ		Reviewed By: BOB

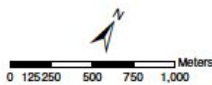




**Legend**

- Secondary Plan Area
- Drainage (GRCA)
- Wildlife Corridors
- High Concentration of Frog Calls

© Grand River Conservation Authority 2012

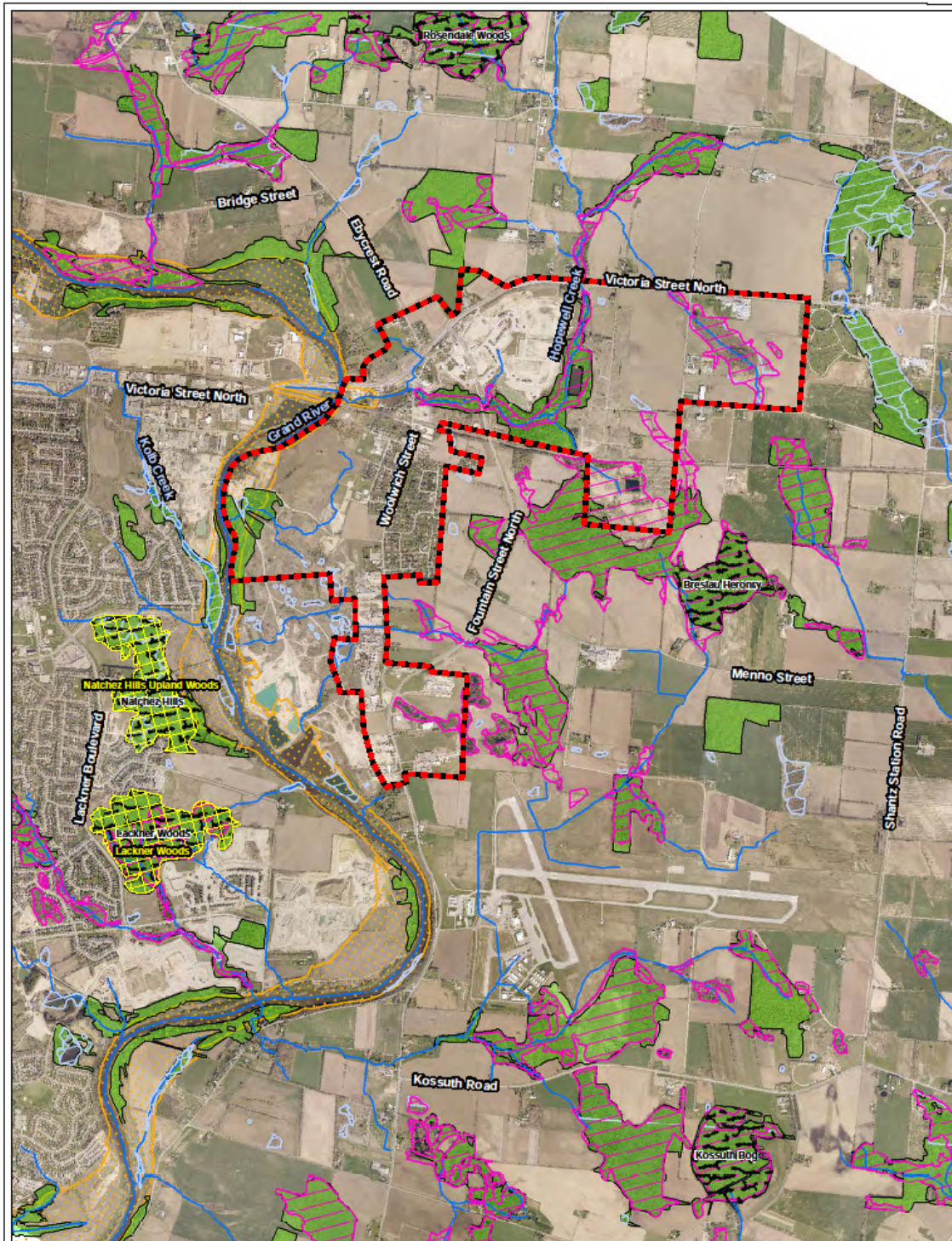


**PLAN B Natural Heritage**  
 Landscape Ecology & Natural Heritage Planning  
170 Parkside & Coopers  
 Westerville, OH  
 43081-2902

**Breslau Secondary Plan**  
 Corridors and Frog Concentration

<b>Project #</b> 2011-41	<b>Figure #</b>
<b>Date</b> January 2016	<b>4</b>
<b>Scale</b> 1:25,000	
<small>Prepared By: JJJ</small>	<small>Reviewed By: BDB</small>

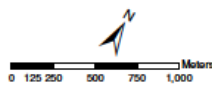




**Legend**

- Secondary Plan Area
- Drainage (GRCA)
- Area of Natural and Scientific Interest (MNR)
- Provincially Significant Wetland (MNR)
- Regulated Wetland (GRCA)
- Provincially Significant Wetland and Significant Woodland (ESPA)
- Significant Woodlands > 4 ha (Region)
- Significant Valleys (Region)

© Grand River Conservation Authority 2012  
 © Queen's Printer for Ontario, 2012



**PLAN B Natural Heritage**  
 Landscape Ecology & Natural Heritage Planning

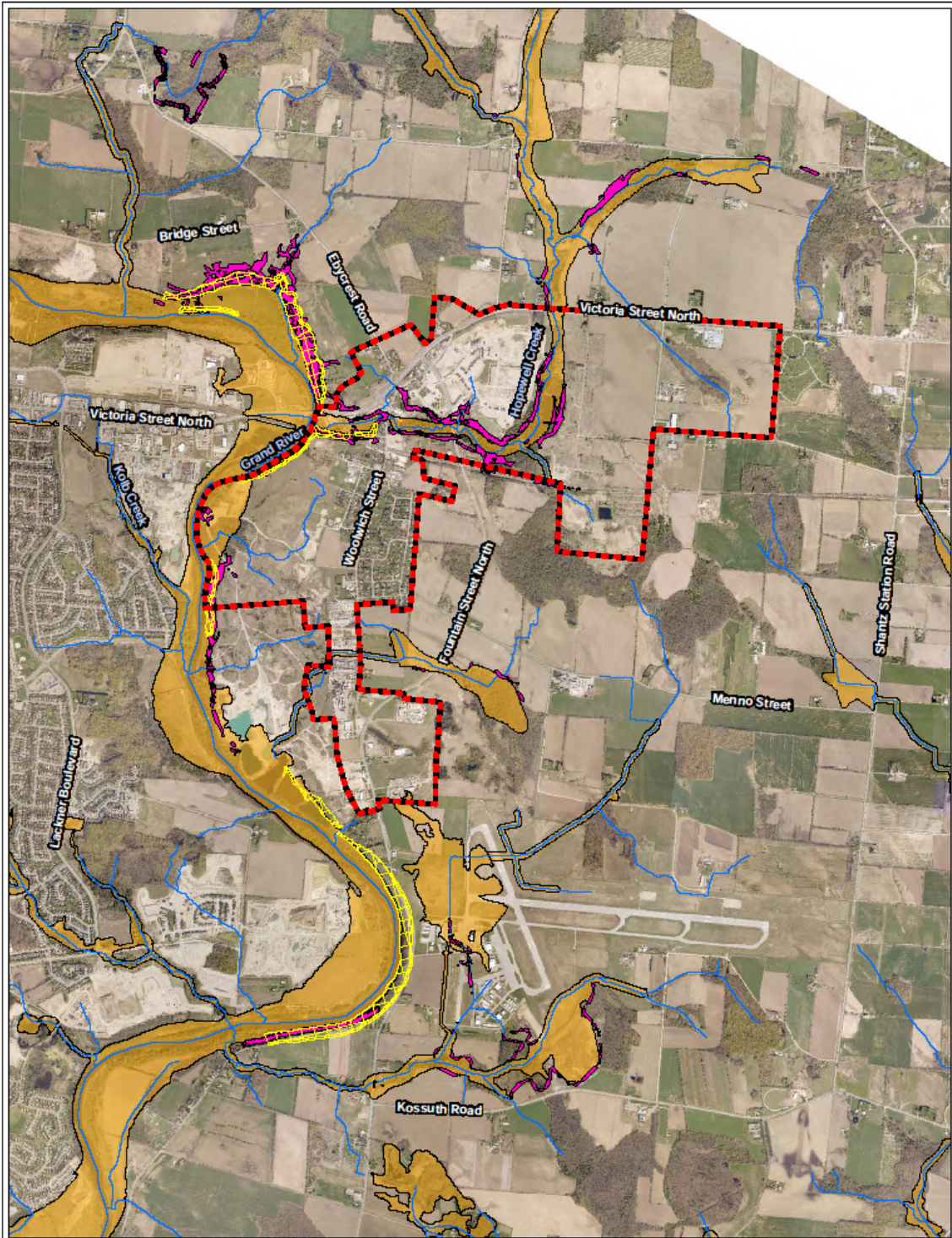
100 Victoria Campus  
 Wellesley, ON  
 L2S 2V6

**Breslau Secondary Plan**  
 Natural Heritage Features

Project #	2011-41
Date	January 2016
Scale	1:25,000
Prepared By:	JJJ
Reviewed By:	BOB

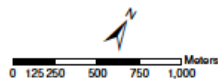
Figure #  
**5**





- Legend**
- Secondary Plan Area
  - Drainage (GRCA)
  - Floodplain (GRCA)
  - Valley Slope (GRCA)
  - Erosion Slope (GRCA)

© Grand River Conservation Authority 2012  
 © Queen's Printer for Ontario, 2012



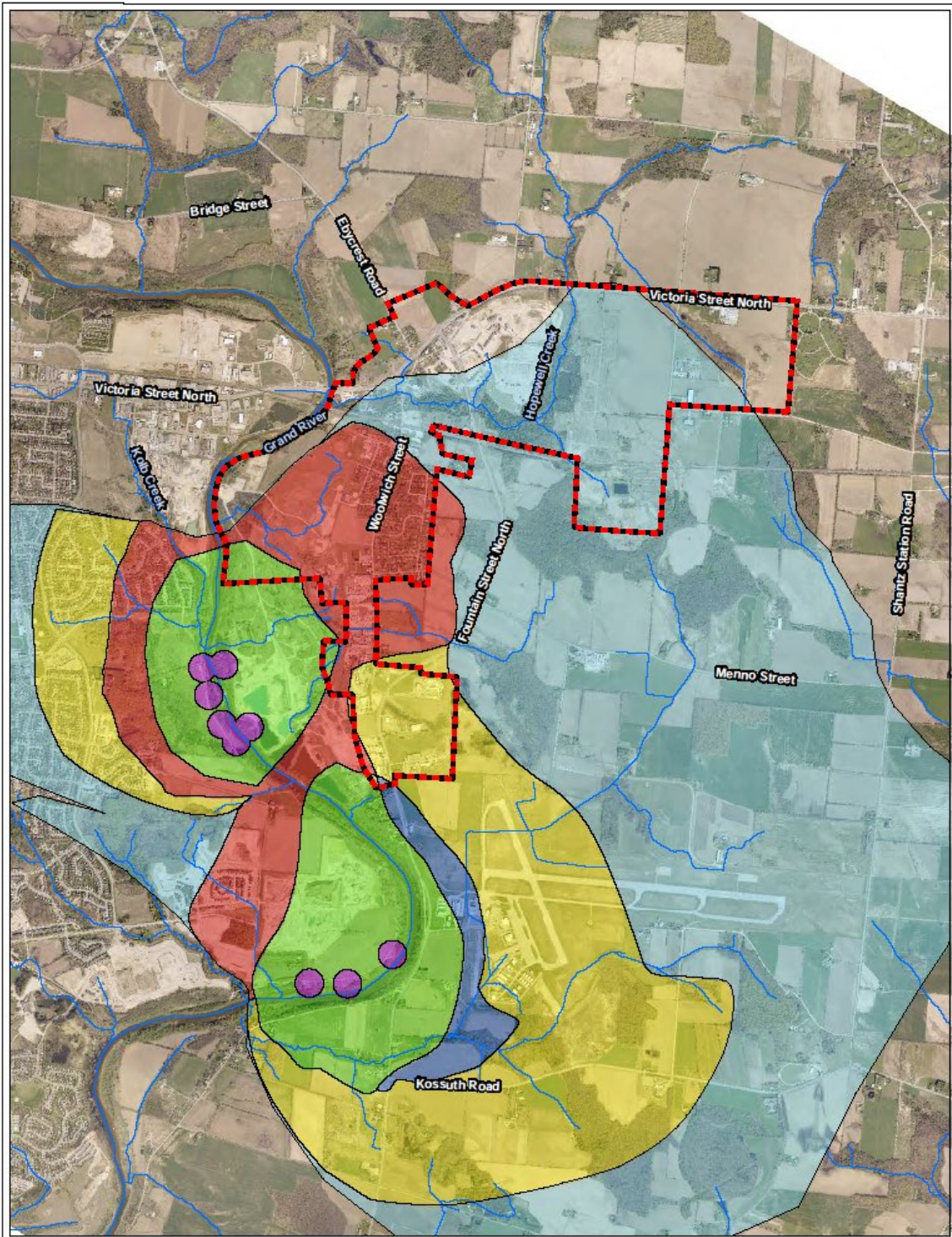
**PLAN B Natural Heritage**  
 Landscape Ecology & Natural Heritage Planning  
175 Pelham Crescent  
 Woodburn, ON  
 L0R 2A0

**Breslau Secondary Plan**  
 Physical Features

Project # 2011-41  
 Date January 2016  
 Scale 1:25,000  
 Prepared By: JJ      Reviewed By: BDB

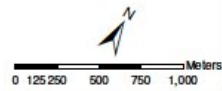
Figure #  
**6a**





- Legend**
- Secondary Plan Area
  - Drainage (GRCA)
  - Well Head Protection Sensitivity Area 1
  - Well Head Protection Sensitivity Area 2
  - Well Head Protection Sensitivity Area 4
  - Well Head Protection Sensitivity Area 5
  - Well Head Protection Sensitivity Area 7
  - Well Head Protection Sensitivity Area 8

© Grand River Conservation Authority 2012



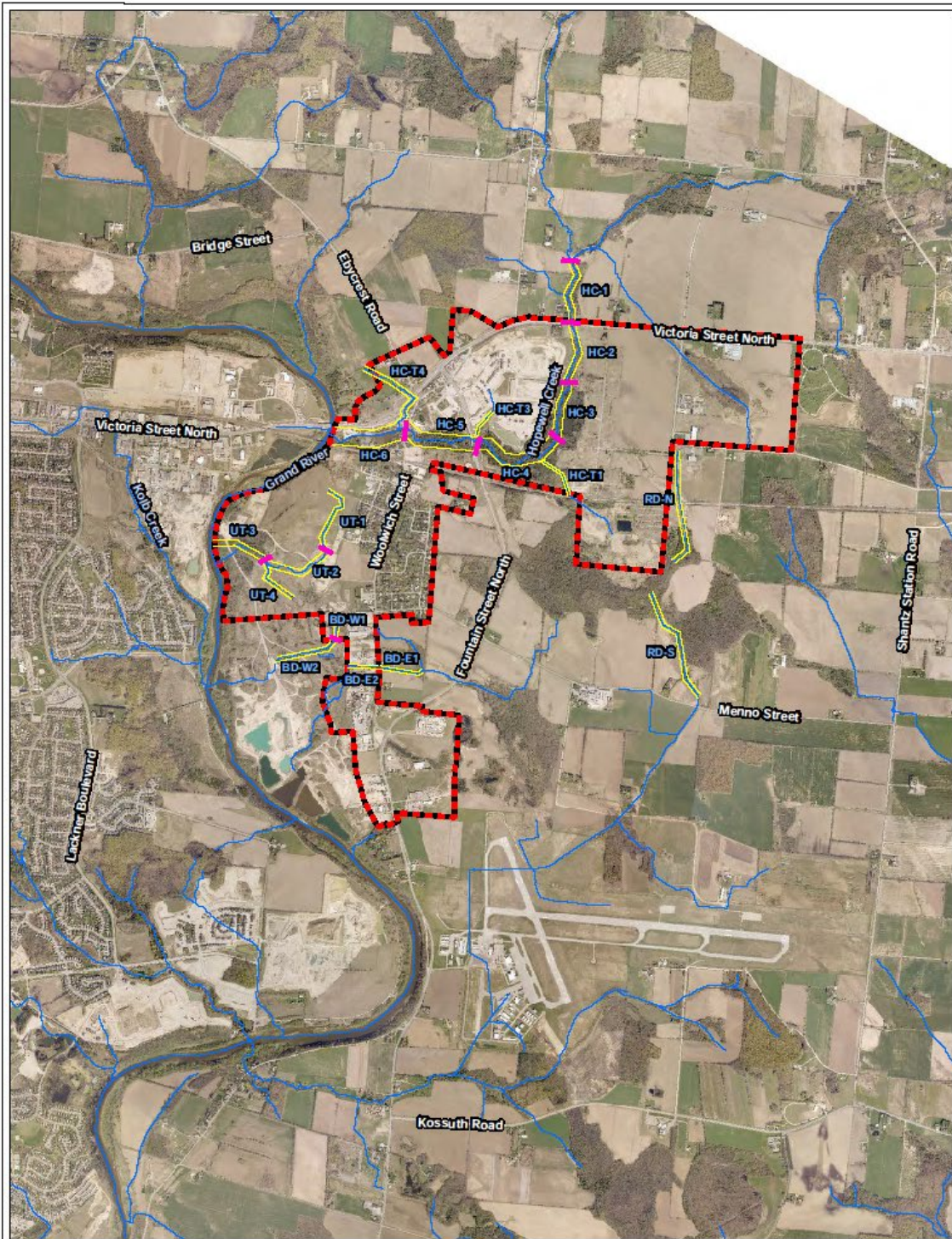
**PLAN B Natural Heritage**  
 Landscape Ecology & Natural Heritage Planning  
17% Fisheries & Conservation  
 Watershed, CAW  
 LRT 2012

**Breslau Secondary Plan**  
 Well Head Sensitivity Areas

Project #	2011-41
Date	January 2016
Scale	1:25,000
Prepared by:	JUJ
Reviewed by:	BOB

Figure #  
**6b**



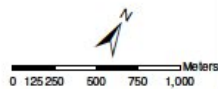


- Legend**
- Secondary Plan Area
  - Drainage (GRCA)
  - Preliminary Meander Belt Width
  - Reach Break

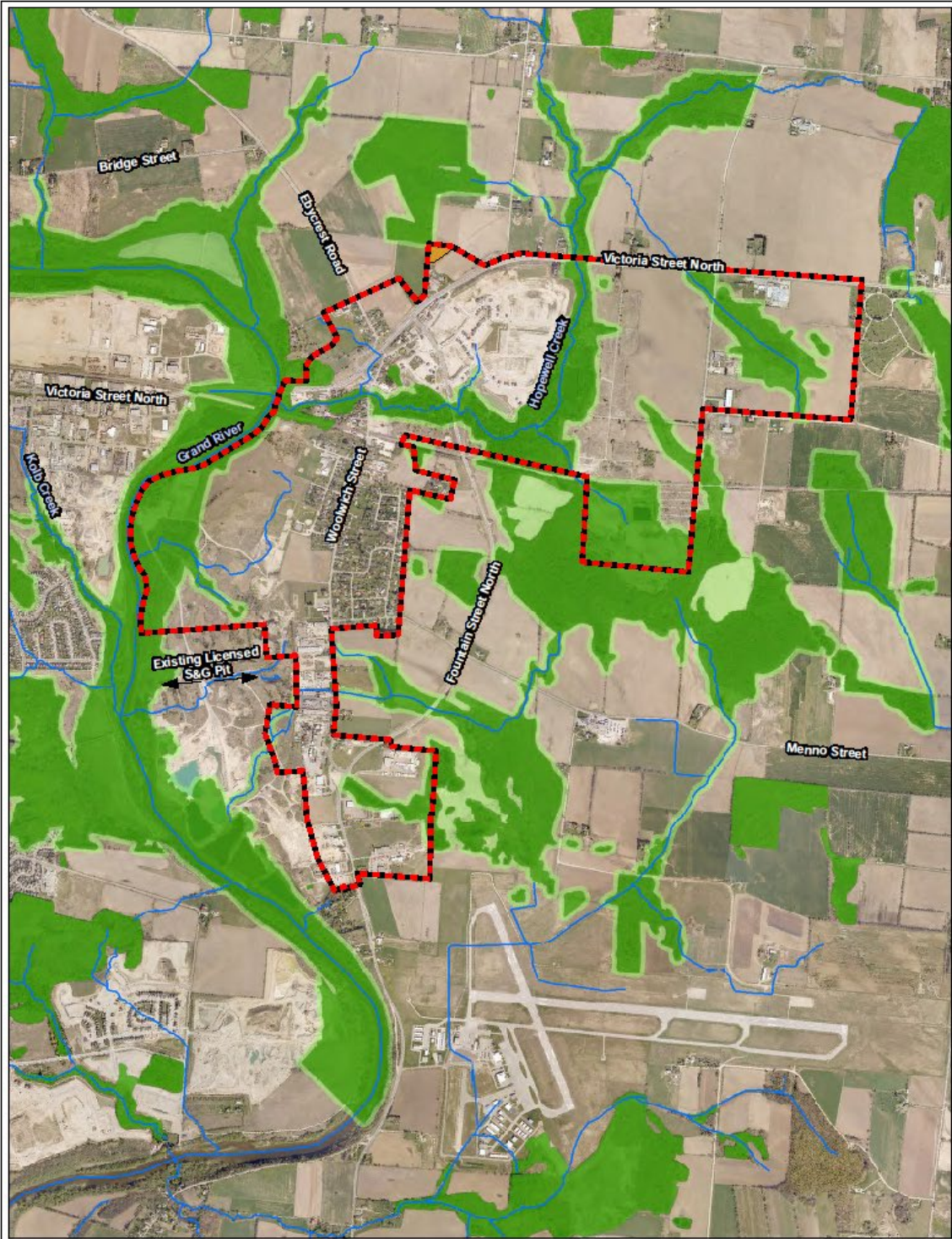
**PLAN B Natural Heritage**  
 Landscape Ecology & Natural Heritage Planning  
501 Village Greenway  
 Wapakoneta, OH  
 45390

**Breslau Secondary Plan**  
*Meander Belt*

Project #	2011-41	Figure #	<b>7</b>
Date	January 2016		
Scale	1:25,000		
Prepared By: JJJ	Reviewed By: BDB		







**Legend**

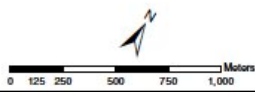
- Secondary Plan Area
- Drainage (GRCA)
- Natural Heritage Features
- 30 m Buffer/Natural Heritage Feature Enhancement
- Other Natural Feature

**PLAN B Natural Heritage**  
 Landscape Ecology & Natural Heritage Planning  
471 Indiana Crescent  
 Waterloo, ON  
 L0R 2R0

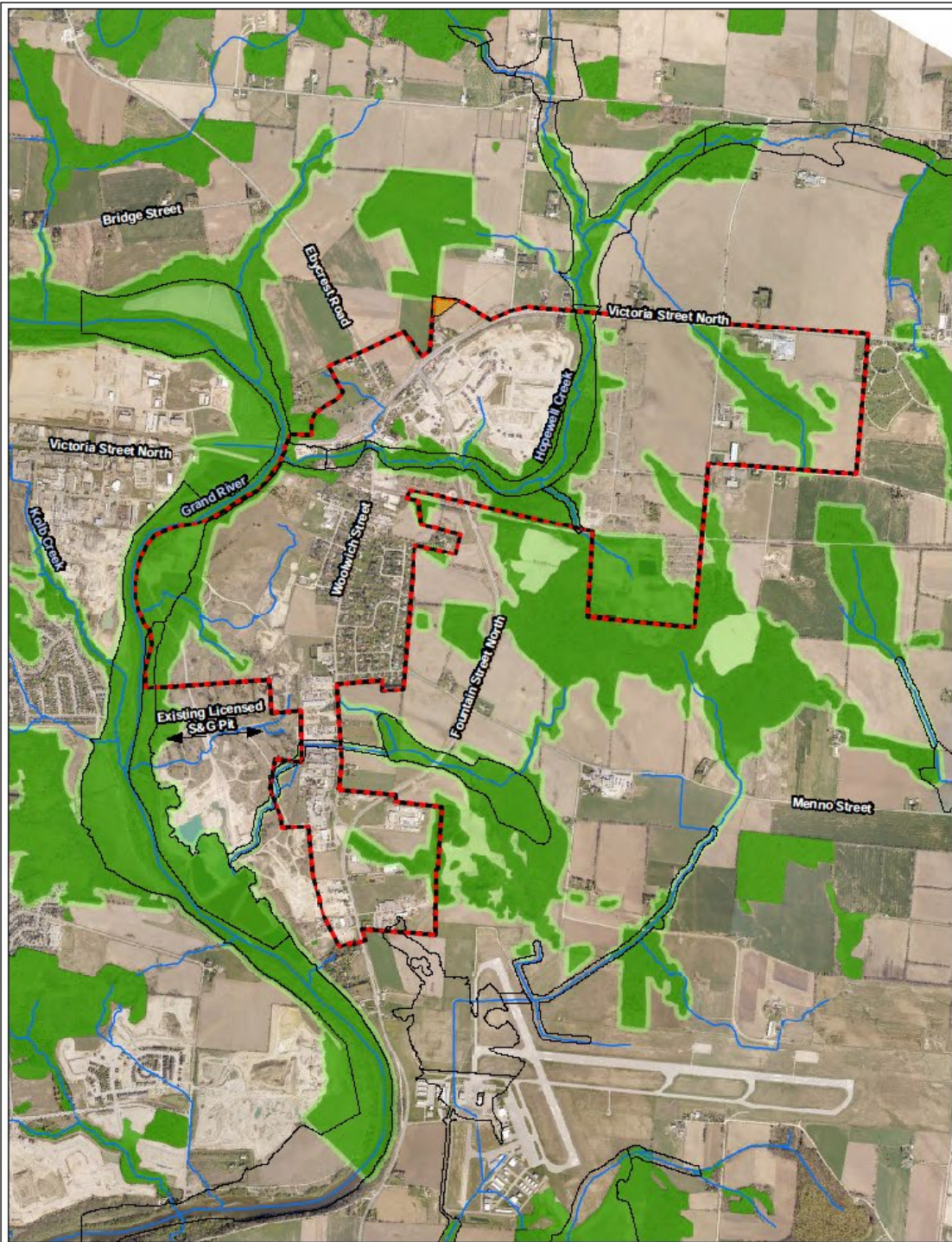
**Breslau Secondary Plan  
 Natural Heritage Framework**

Project # 2011-41  
 Date January 2016  
 Scale 1:20,000  
 Prepared By: JLU | Reviewed By: BDB

Figure #  
**8a**



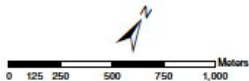




**Legend**

- Secondary Plan Area
- Drainage (GRCA)
- Floodplain (GRCA)
- Natural Heritage Features
- 30 m Buffer/Natural Heritage Feature Enhancement
- Other Natural Feature

© Grand River Conservation Authority 2012



**PLAN B Natural Heritage**  
Landscape Ecology & Natural Heritage Planning

471 Indiana Crescent  
Woodward, MI  
48091-2100

**Breslau Secondary Plan**  
Natural Heritage Framework

Project #	2011-41	Figure #	<b>8b</b>
Date	January 2016		
Scale	1:20,000		
Prepared By: JJJ	Reviewed By: BDB		